

SONOFF Zigbee Water Leak Sensor | SNZB-05P

Early Detection, Maximum Protection



*Zigbee hub is needed (e.g. ZBBridge/-P/-U, NSPanel Pro, iHost)

Leaking & Dripping Detection



Gold-plated Probe for Corrosion Resistance



Extended Detection Support



IP67 Rating



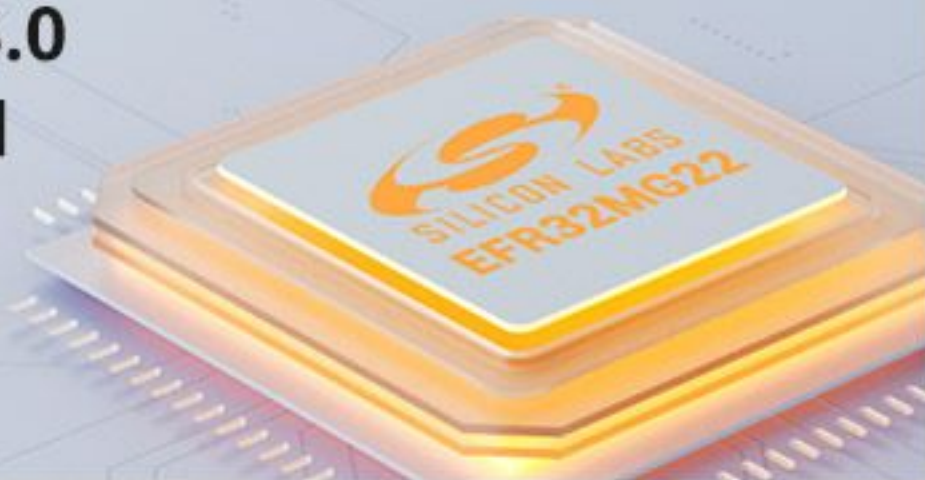
Smart Scene Linkage



Multiple Notifications



Zigbee 3.0 Protocol



5-year Battery Life

5 YEARS





Spot Leaks Early, Protect Your Family

Water leaks can cause extensive damage to homes, leading to structural issues, mold growth, and health hazards. Quickly detecting leaks is essential to prevent costly repairs and ensure a safe living environment.



Basement Floods During the Rainy Season

Flooding the basement can damage walls, floors, carpets, and furniture, leading to mold and potentially damaging electrical equipment.



HVAC Leaking in the Attic

Some homes have HVAC systems installed in the attic, but potential leaks can lead to extensive and costly property damage. From soggy insulation to mold growth, leaking issues in the attic often result in structural integrity problems and may pose health risks to family members.

Various Unexpected Leaks May Cause the House to Be Flooded



Pipe freeze cracks



Aging pipes



Washing machine leaks



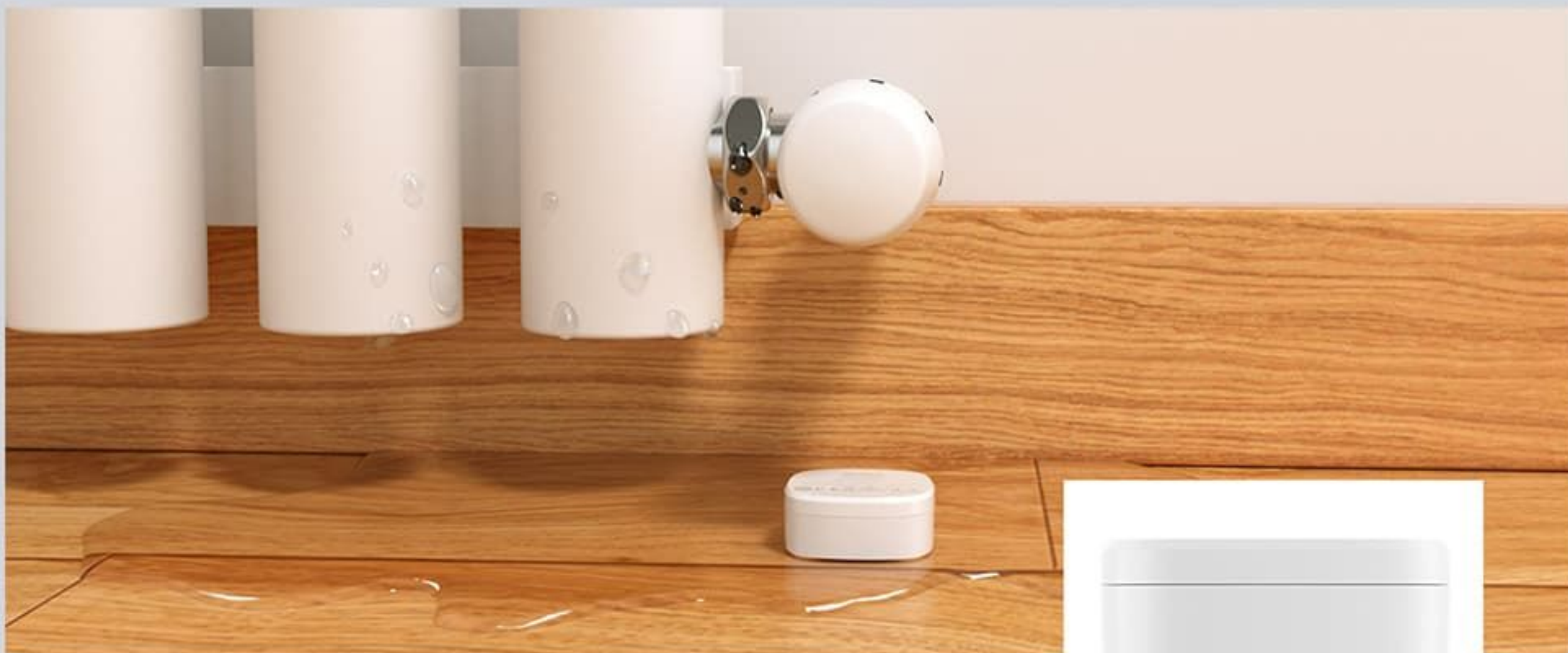
Dishwasher leaks



Aging water heater

SONOFF Zigbee Water Leak Sensor SNZB-05P Is Coming!!!

Multiple Detection Methods for Various Scenarios



Leaking Detection

The elevated probe design can detect a 0.5mm liquid level and allows for use on metal surfaces without false triggers from the metal.





Dripping Detection

Concave water collection design detects drips and stops leaks at the source.



Extension Cable Detection

Wide-range detection or narrow-area inspection, leaving no water leaks undetected.

*The extension cable can be connected in series without any limit on the total length.

*In high humidity conditions, the water leak detection cable may trigger leak detection.

Striving for Details, Creating Exceptional Quality

IP67 waterproof and dustproof rating, providing short-term immersion protection, ensures normal operation in humid and dusty environments.



*The testing standards are based on IEC 60529: 1989+A1:1999+A2:2013

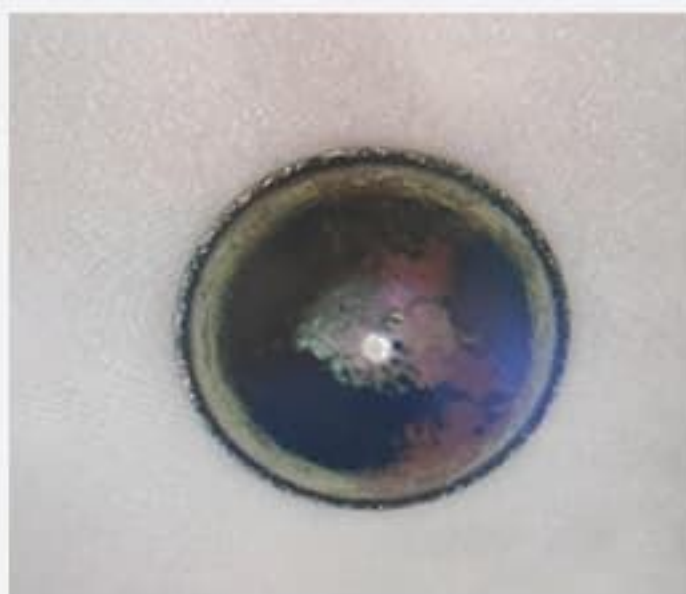
Equipped With Gold-Plated Probes for Enhanced Corrosion Resistance

▼ SONOFF SNZB-05P

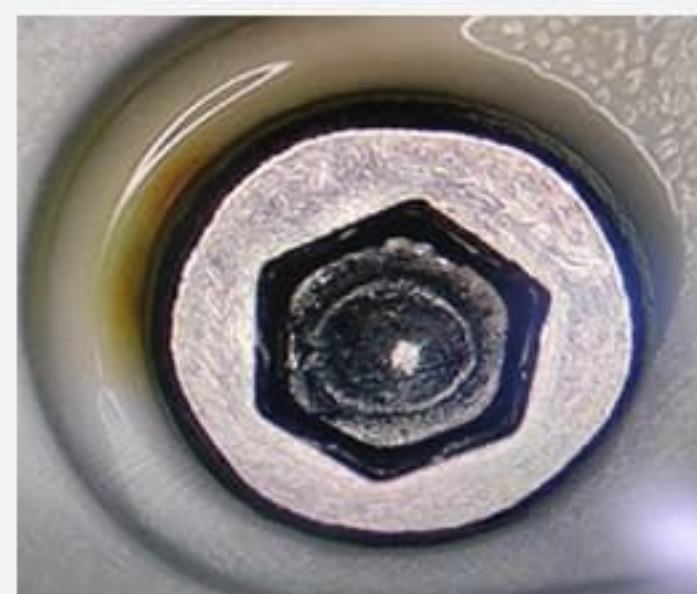
48-hour salt spray test



Other Brands ►

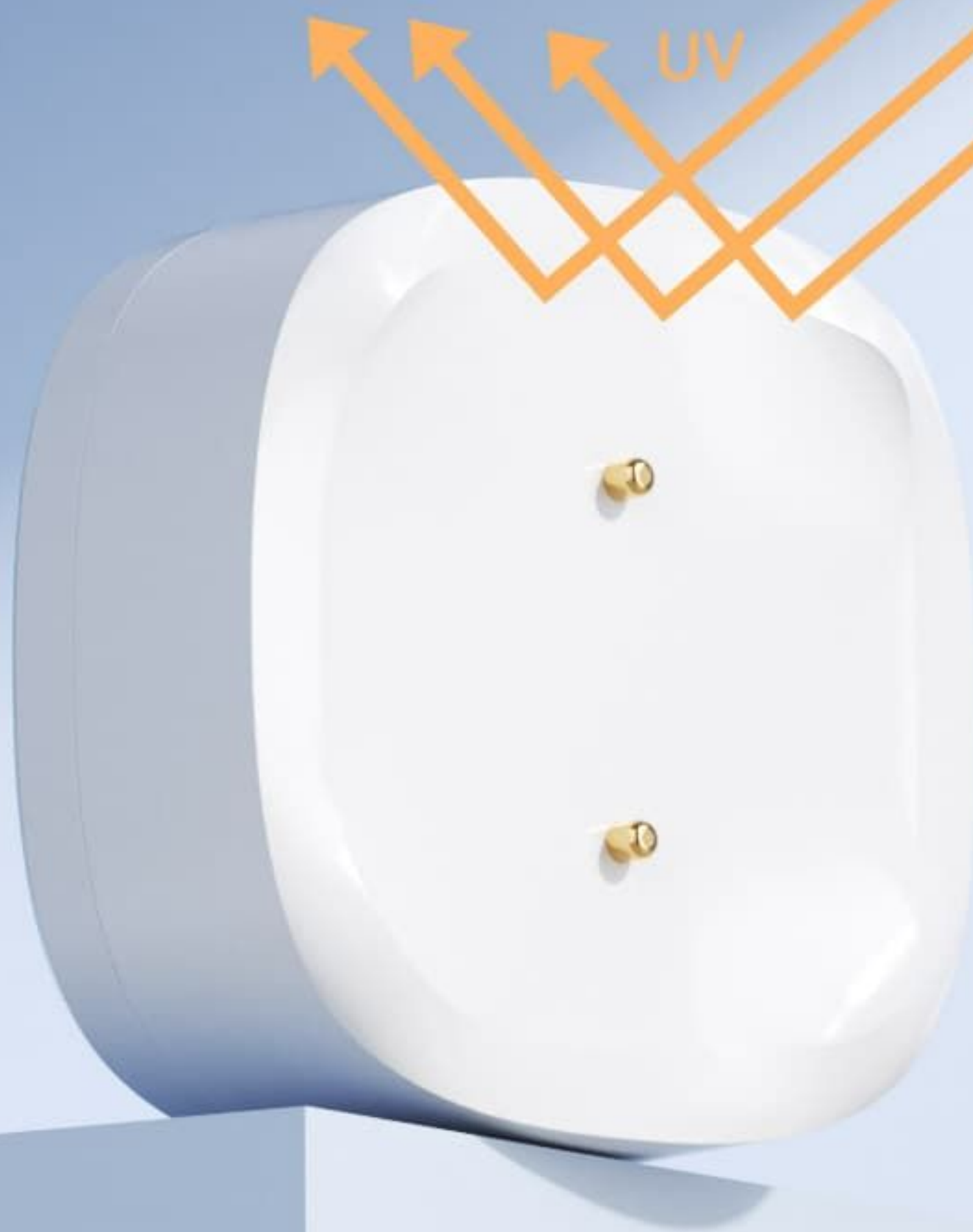


Nickel-plated probe
Coating peels off



Stainless steel probe
Probe rusts

Made From UV-Resistant Materials to Prevent Discoloration Over Time



*Wet water leak detection cable can be directly placed under sunlight for drying.

Extended Battery Life

Using CR2477 battery extends the battery life to over 5 years, eliminating concerns about frequent battery replacements.

5 YEARS



*The battery life is a theoretical value obtained through internal laboratory testing by SONOFF, with a test environment of 25°C, connected to SONOFF Zigbee hub.

Multiple Notifications



App Push Notification



Scene trigger Zigbee hub sound alarm



***Email notification**

*Need to subscribe to eWeLink Advanced plan.



eWeLink

Cancel

SNZB-05P Leak detected.

Tap to view

Redundant Alarm Settings to Prevent Missed Alerts

When water leaking occurs, report every ten minutes to prevent missed alerts due to network fluctuations, ensuring the safety of your property.



eWeLink

SNZB-05P Leak detected.

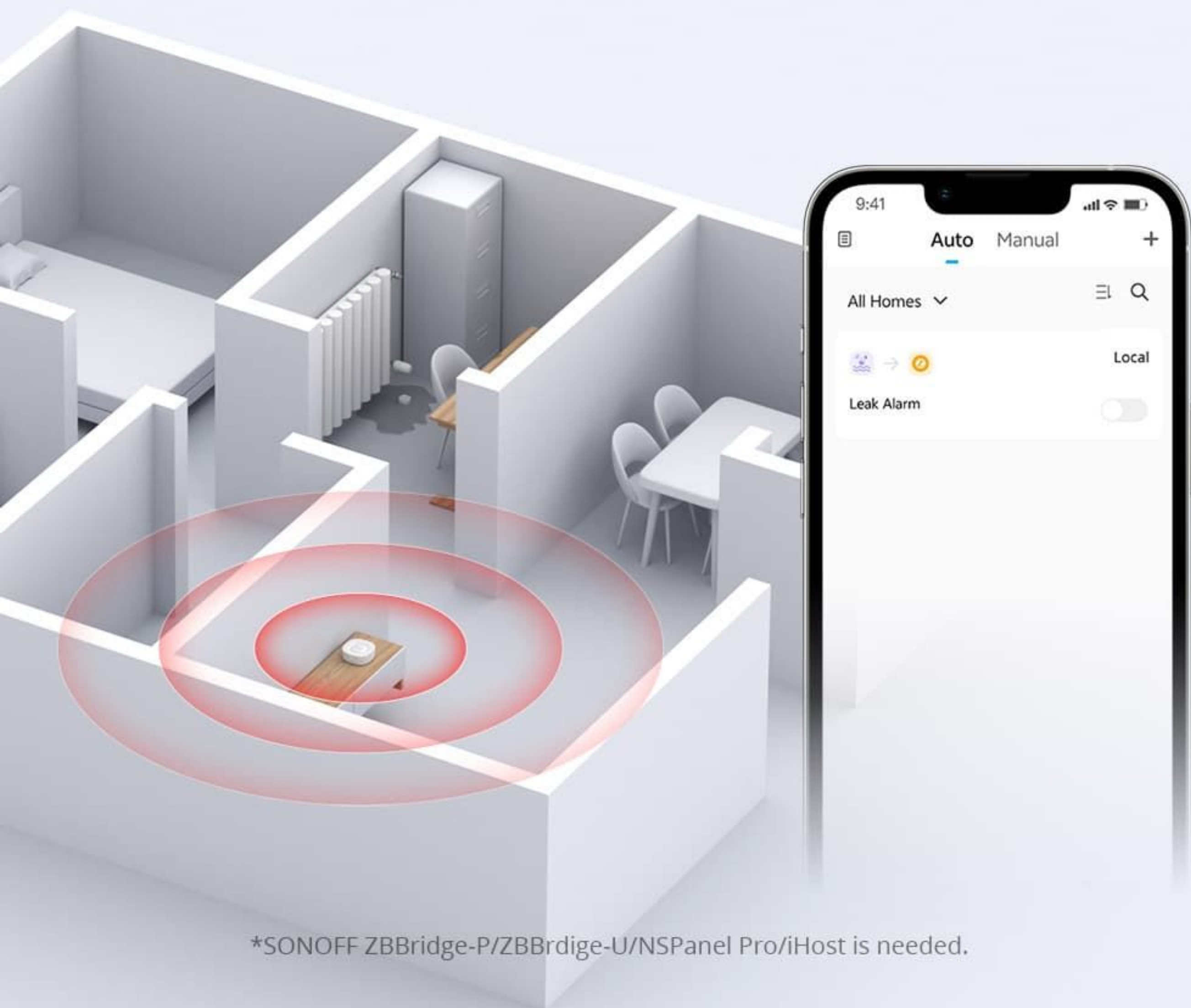
Tap to view



*Notifications can be turned off by disabling push notification and scenes on eWeLink App.
*This feature will be supported in V1.0.2 and can be enabled through a firmware OTA upgrade via the ZBBridge-P/ZBBridge-U/NSPanel Pro/ZHA/Zigbee2Mqtt.

Local Scenes Make Your Alarms More Stable and Reliable

Use Zigbee local scenes to trigger the gateway's sound alarm. Even if the WiFi network fails, the alarm will still function properly.



*SONOFF ZBBridge-P/ZBBridge-U/NSPanel Pro/iHost is needed.

Supported Third-party Platforms

Based on eWeLink App Third-party platform function, supporting *Alexa, Google, Alice, SmartThings, IFTTT.



*To access the eWeLink app, a SONOFF Zigbee hub is needed.

*SMS notification requires subscribing to the eWeLink Advanced plan and setting up IFTTT.

*Due to Alexa not supporting water leak sensors, it will be displayed as a motion sensor in Alexa routines.

Supported Zigbee Hubs

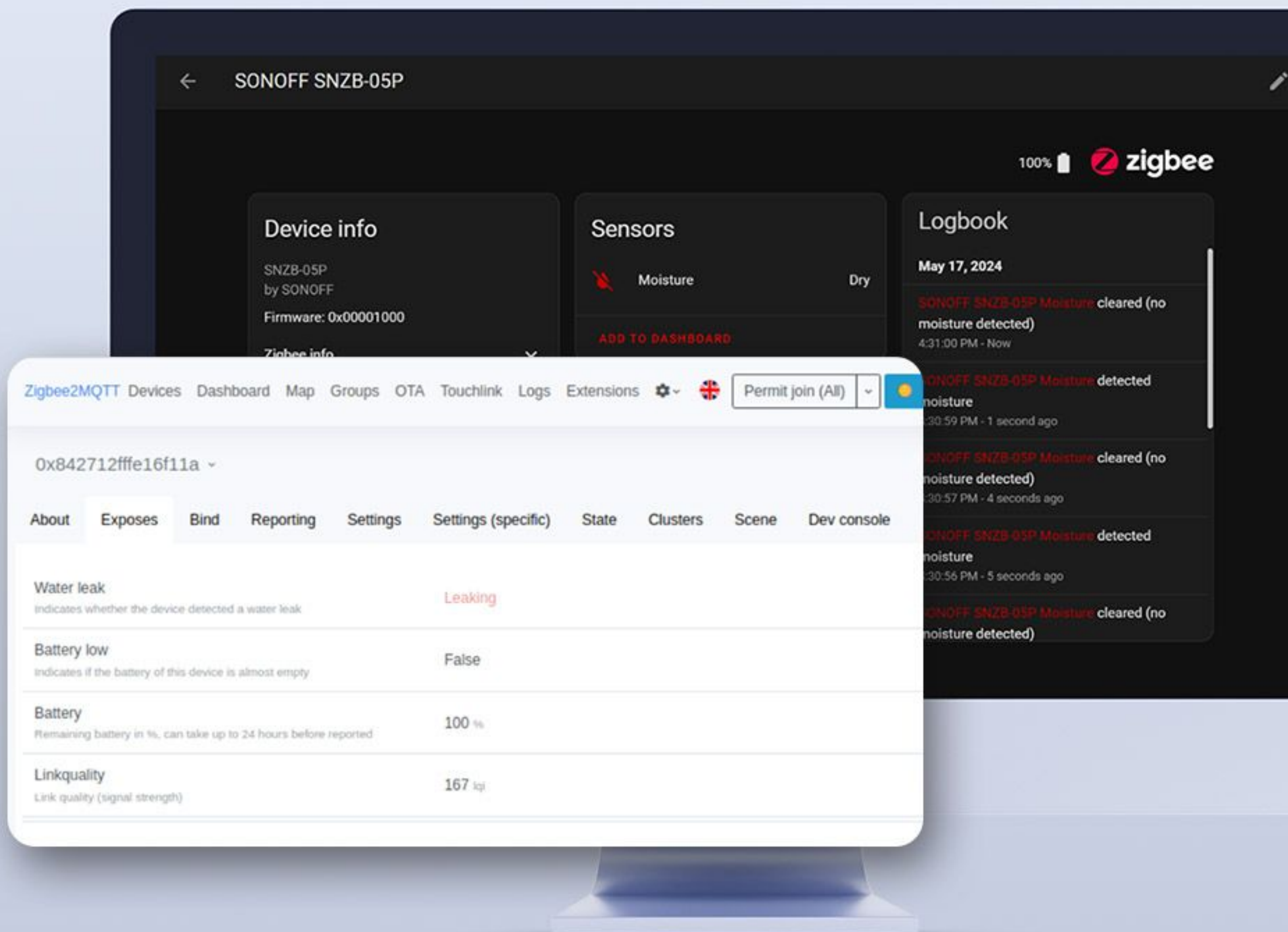


*Need to install edge driver to connect to SmartThings hub. For details, please refer to the sonoff.tech - Explore - TUTORIAL.

*Supports adding to other Zigbee 3.0 hubs, provided they support the water leak sensor category. Please confirm with the hub manufacturer.

Supported Home Assistant

Easily add to Home Assistant for your home automation through ZHA or Zigbee2MQTT



*A Dongle is required to connect to ZHA or Z2M, such as SONOFF ZBDongle-P/-E.

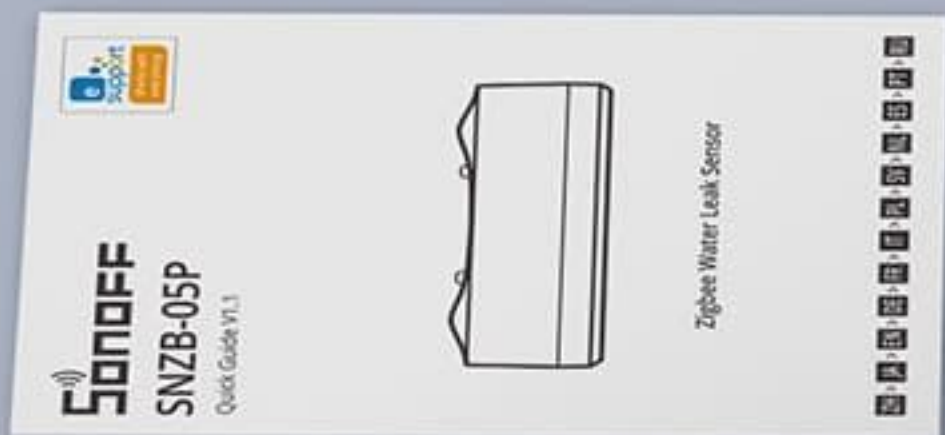
What's in the Box

1. Water Leak Sensor

2. Quick Guide

3. Water Leak Detection Cable, Cable Clips*3

#Requires separate purchase or purchase of a combo kit



Specification

**Model**

SNZB-05P

Wireless connection

Zigbee 3.0

Battery model

CR2477(3V)

Working temperature

-10~60°C

Working humidity

0~100%RH

Casing material

PC+ABS

Product dimension

48x48x21.6mm

Net weight

45g

Communication distance

130m (Open space)

**Model**

WLDC200

Working temperature

-10~60°C

Working humidity

0~80%RH

Casing material

PC+ABS

Length

2m(6.5ft)

Net weight

32g

*Water Leak Detection Cable requires separate purchase or purchase of a combo kit.