

Manually activate smart devices with one button

SONOFF Zigbee Wireless Switch



*Requires Zigbee hub.

Custom Button Action



Single
press



Double
press



Long
press



5 Years Battery Life



Low Battery Notification



Smart Scene



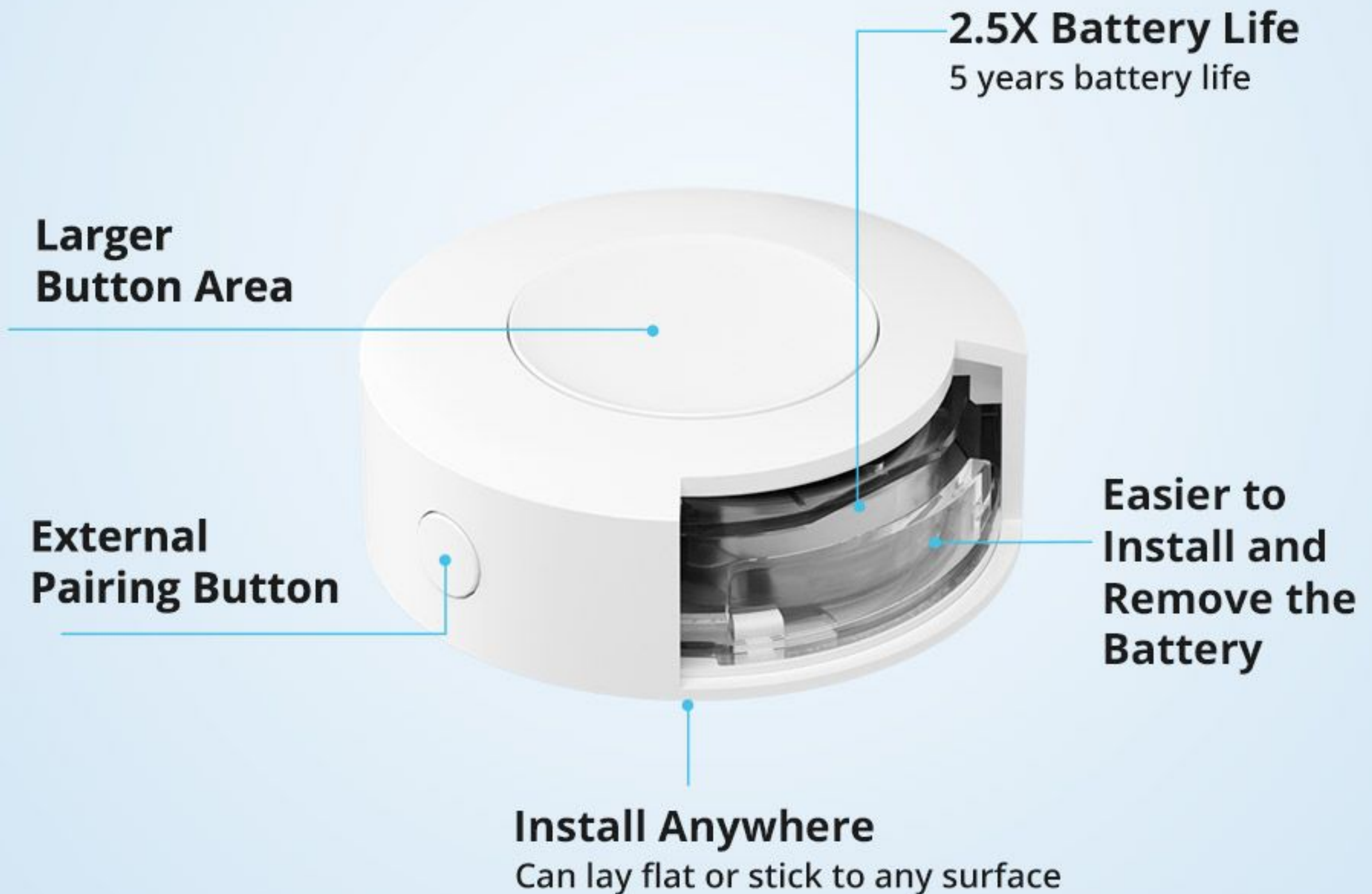
Zigbee Protocol



History Record



Improved Design and Performance



*The battery life data is a theoretical value, obtained from SONOFF's internal laboratory under a specific test environment(10 keystrokes/hour, pairing once a month). Actual use may vary slightly due to product differences, firmware software versions, operating conditions, and environmental factors. Please refer to the actual use.

Zigbee Standard Compatible



NSPanel Pro



SmartThings hub V3



AeoTec Smart Home Hub V3



SONOFF Zigbee Bridge / Pro



SONOFF ZBDongle-P/E

One Switch, Three Actions

Customize the operation corresponding to single press, double press, and long press of a wireless switch.



Single press



Double press



Long press



*Requires Zigbee hub.



Single press
Turn on/off lights



Double press
Turn on/off fan



Long press
Turn on/off coffee maker

Turn off All Devices with One Click

Turn off all lights, plugs, blinds, and more with one click when you leave home.



Act as a Doorbell

You will be notified in time when visitors press the wireless switch.



Wireless Switch

+



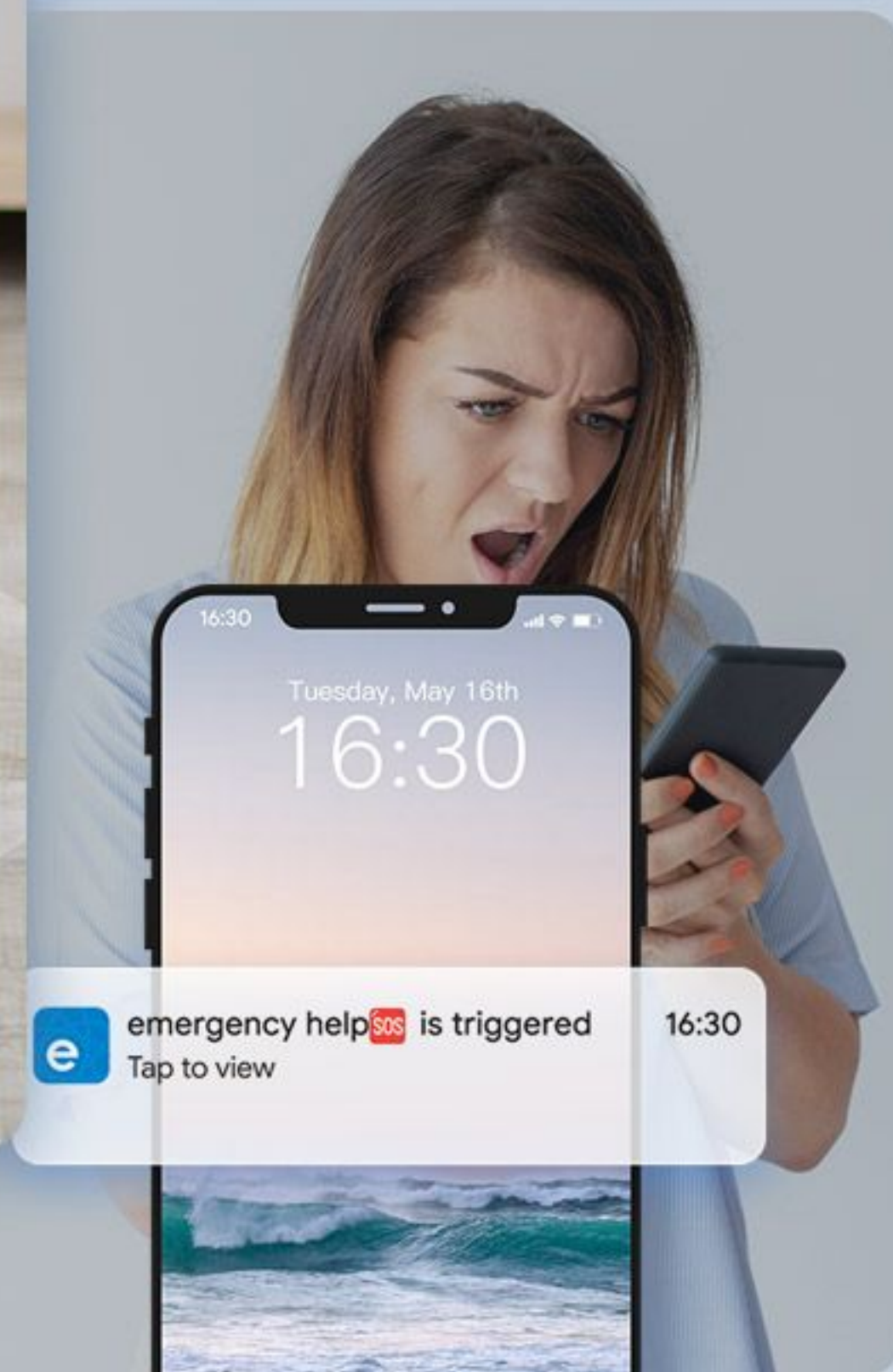
NSPanel Pro



*Requires use with NSPanel Pro.

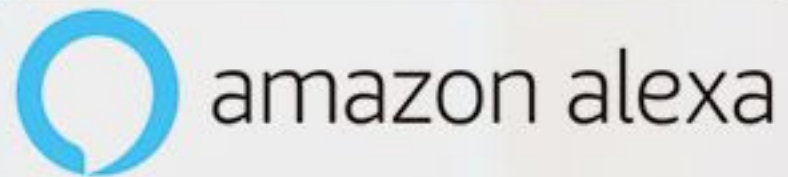
Emergency Button, More Peace of Mind

In an emergency, press the button for help.



Wireless Switch for Your Alexa Routines

Trigger Alexa routines with the press of the wireless switch.



*Requires SONOFF Zigbee hub.

Two-way Control

Connect the Wireless Switch with SONOFF smart wall switches and you can turn off the light downstairs after going upstairs.



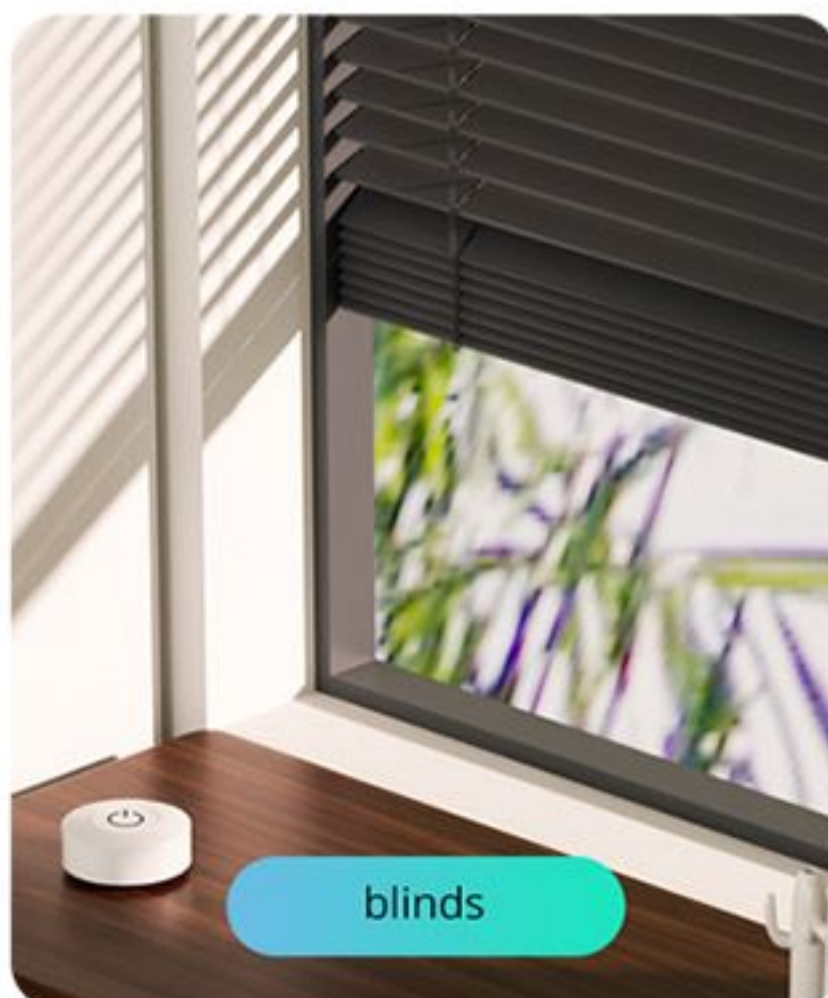
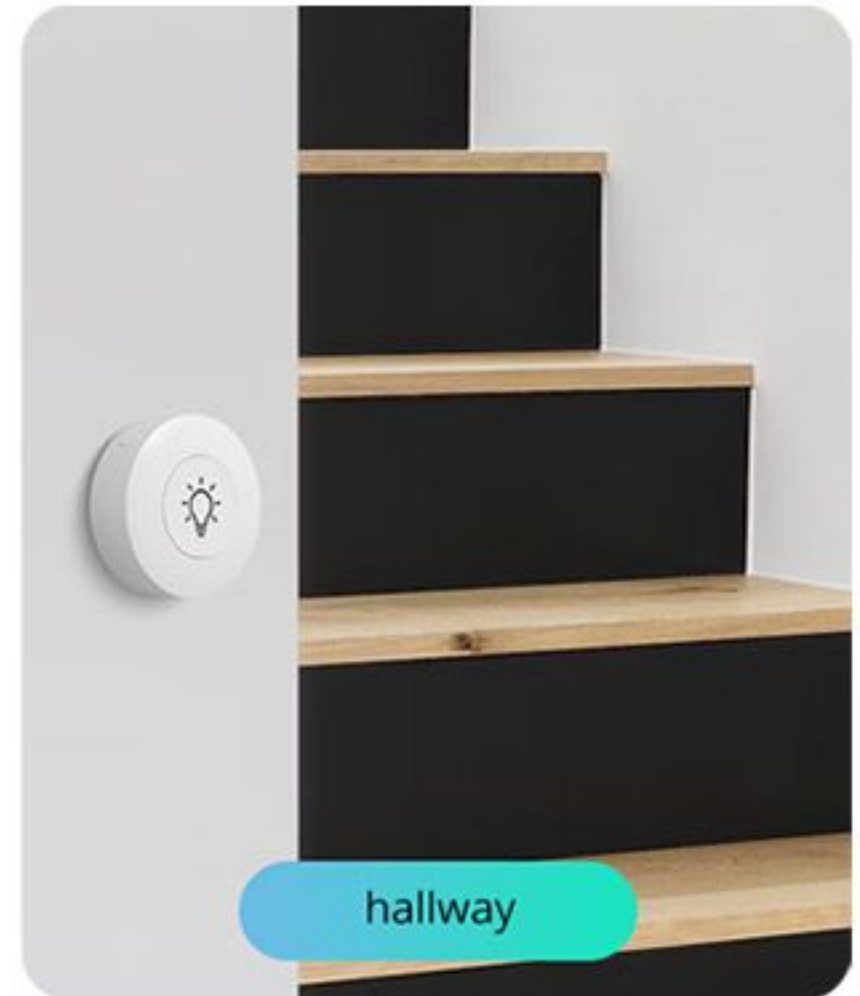
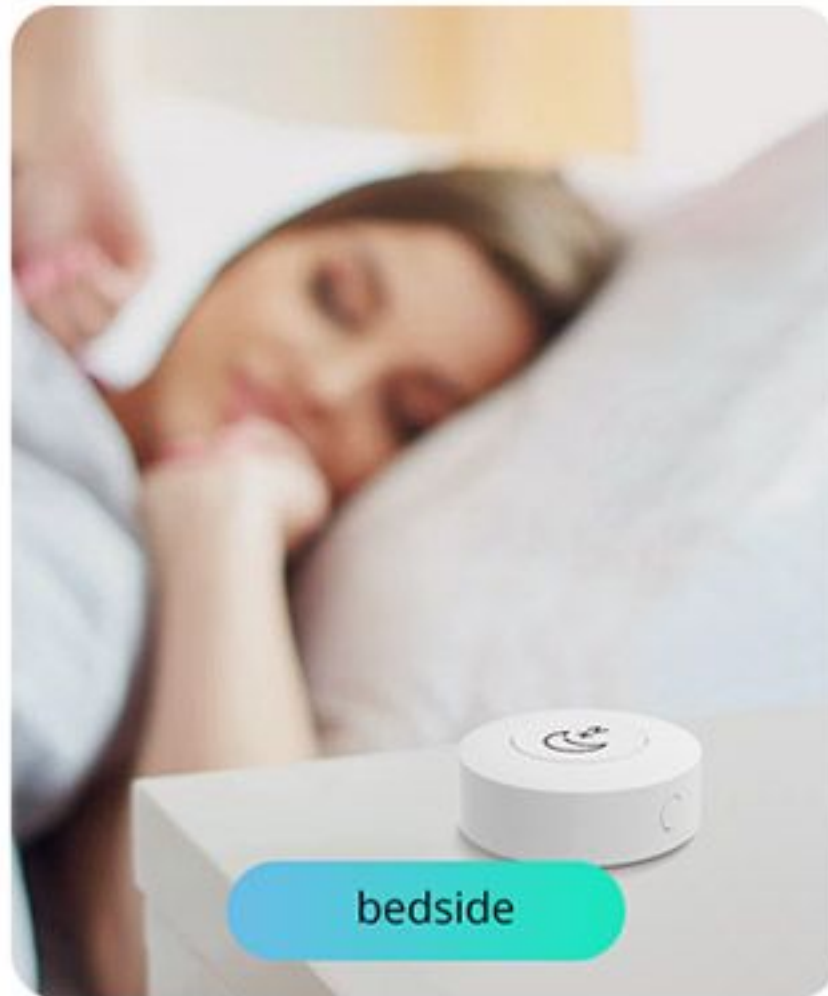
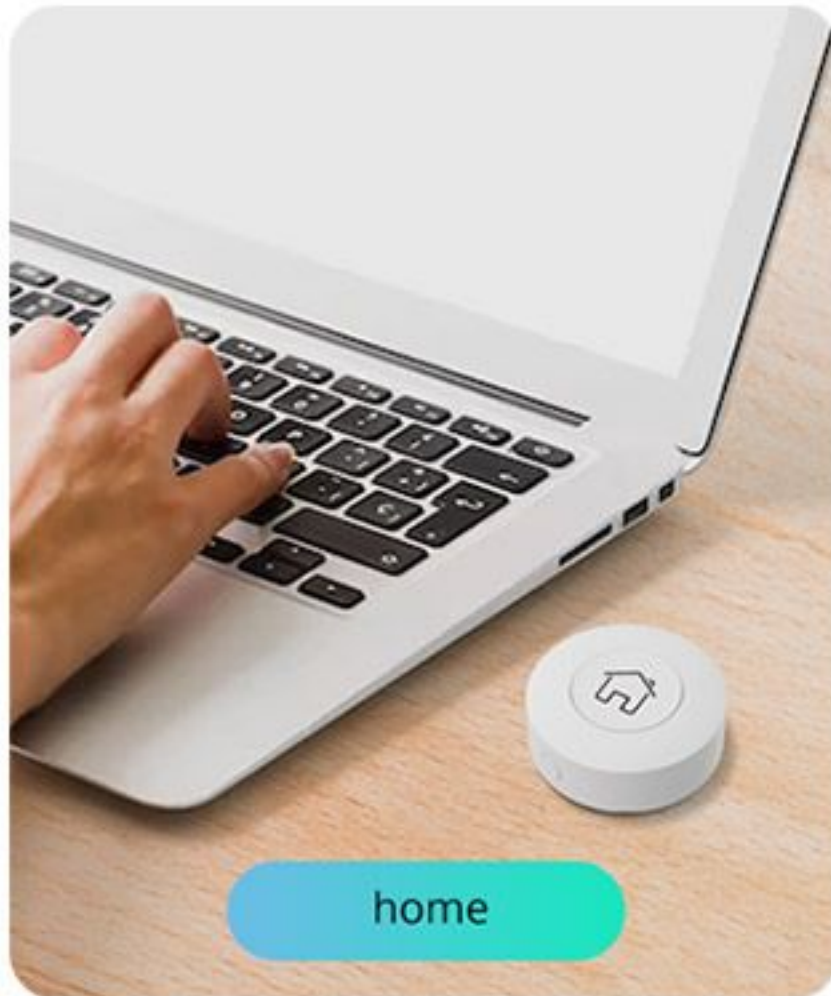
Stickers for Your Choice

Use icon stickers to clarify what each button does.



Put It Anywhere for Your Use

You can easily control it anywhere, no matter your home, office, shop, restaurant, etc.



Various Installation Methods

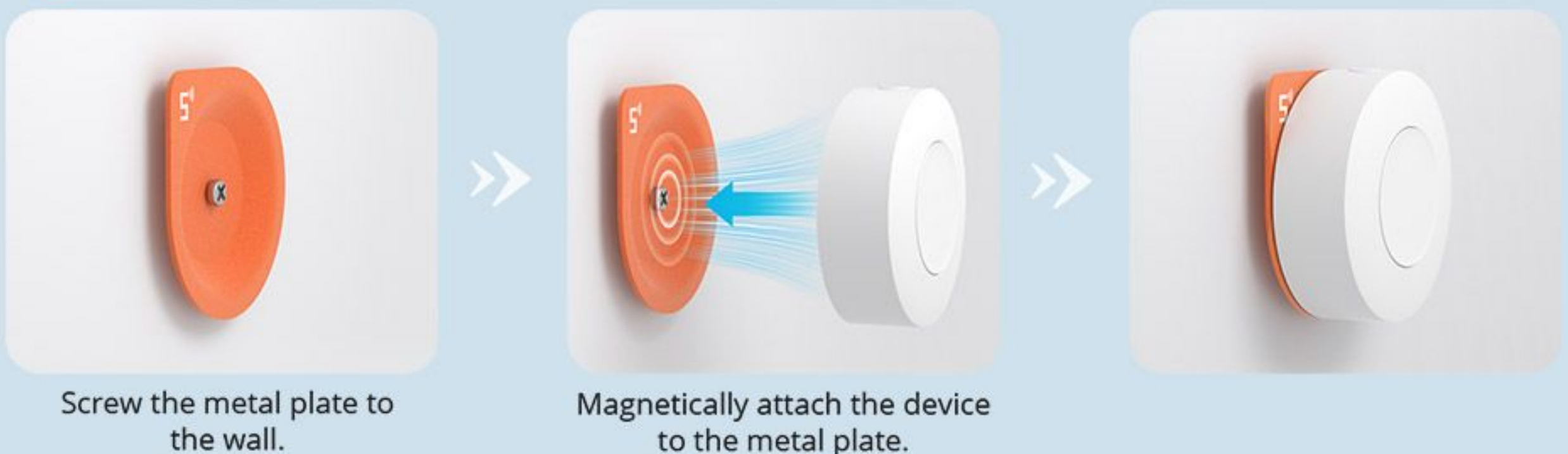
1 Stick with 3M Adhesive



2 Stick with 3M Adhesive and Metal Plate



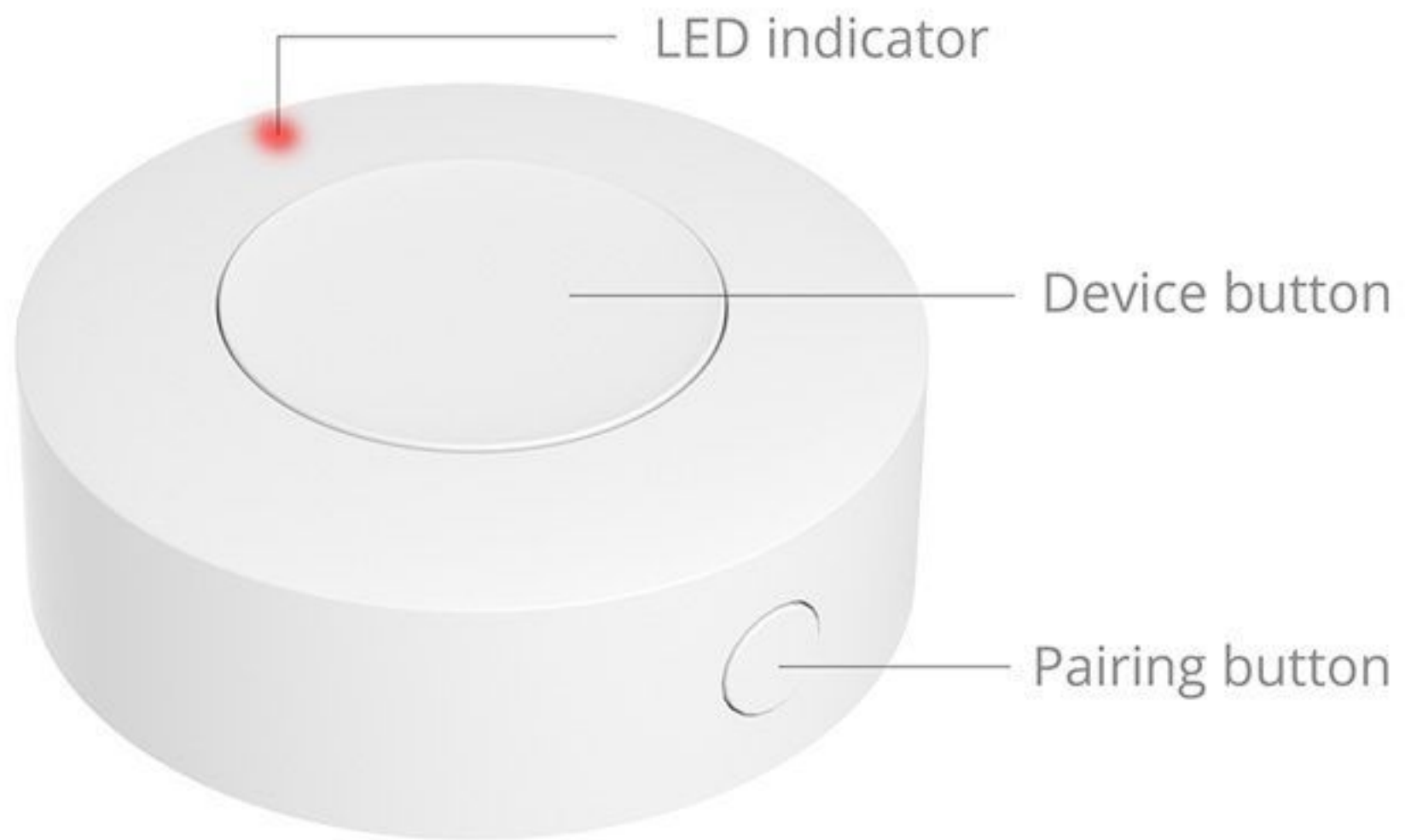
3 Screw Mount



Package



Specifications



Model

SNZB-01P

Wireless connection

ZigBee (IEEE 802.15.4)

Battery model

CR2477

Working temperature

-10°C ~ 60°C

Casing material

PC

Net weight

27.8g

Product dimension

45x45x17.7mm