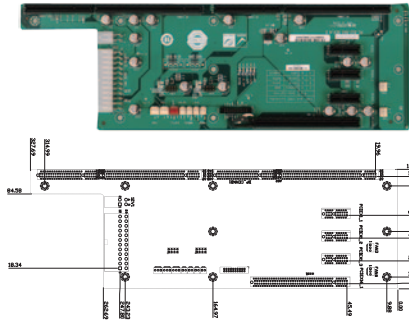
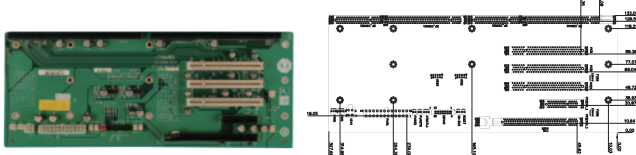


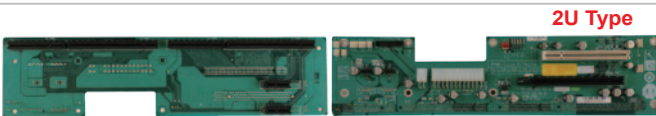
**PE-5S2-R40**Mounting holes  
compatible with PCI-5S**Ordering Information**

|            |   |
|------------|---|
| PE-5S2-R40 | 5-slot backplane with one PCIe x16 slot and three PCIe x1 slots |
| RACK-500G  | 5U 5-slot full-size rack-mount chassis                          |

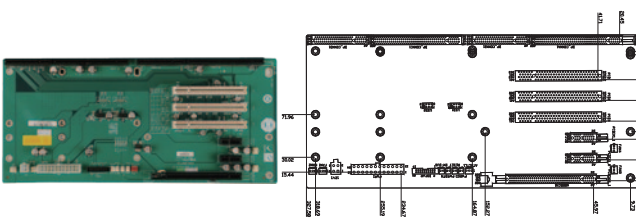
**PE-6S2-R40**Mounting holes  
compatible with PCI-6S**Ordering Information**

|            |   |
|------------|---|
| PE-6S2-R40 | 6-slot backplane with one PCIe x16 slot, one PCIe x4 slot and three PCI slots |
| PAC-106G * | 6-slot full-size compact chassis  |
| PAC-107G * | 6-slot full-size compact chassis  |
| PAC-1000G  | 6-slot full-size compact chassis  |

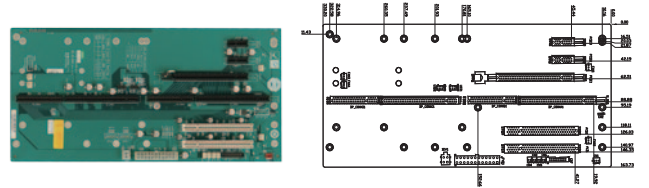
\* When using a PCIe x16 add-on card, the length of the card must not exceed 167mm or 6.57 inches.

**PE-6SD2-R40**Mounting holes  
compatible with PCI-6SD**Ordering Information**

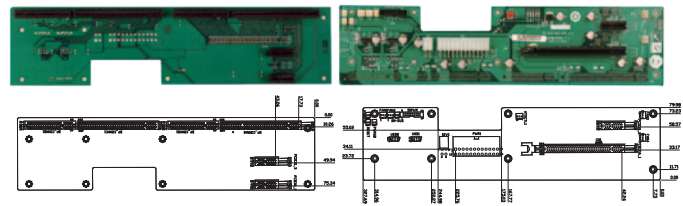
|             |   |
|-------------|---|
| PE-6SD2-R40 | 5-slot backplane with one PCIe x16 slot, two PCIe x1 slots and one PCI slot |
|-------------|---|

**PE-7S-R40**Mounting holes  
compatible with PCI-7S**Ordering Information**

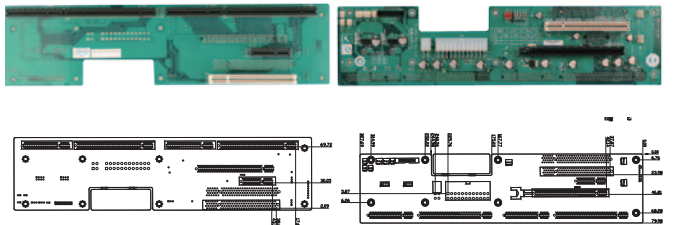
|           |  |
|-----------|--|
| PE-7S-R40 | 7-slot backplane with one PCIe x16 slot, two PCIe x1 slots and three PCI slots |
| PAC-1700G | 7-slot full-size compact chassis   |

**PE-6S-R41**Mounting holes  
compatible with PCI-7S**Ordering Information**

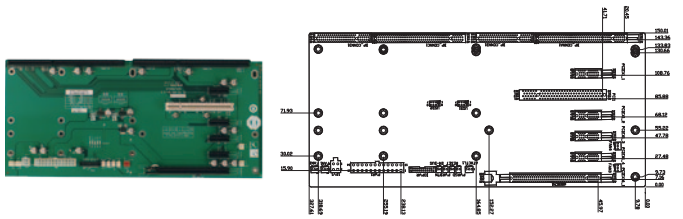
|            |  |
|------------|--|
| PE-6S-R41  | 6-slot backplane with one PCIe x16 slot, two PCIe x1 slots and two PCI slots |
| RACK-305G  | 4U 14-slot full-size rack-mount chassis                                      |
| RACK-360G  | 4U 14-slot full-size rack-mount chassis                                      |
| RACK-3000G | 4U 14-slot full-size rack-mount chassis                                      |
| PAC-1700G  | 7-slot full-size compact chassis   |
| PAC-125G   | 10-slot full-size compact chassis  |

**PE-6SD-R40**Mounting holes  
compatible with PCI-6SD**2U Type****Ordering Information**

|            |   |
|------------|---|
| PE-6SD-R40 | 5-slot backplane with one PCIe x16 slot and three PCIe x1 slots |
|------------|---|

**PE-6SD3-R40**Mounting holes  
compatible with PCI-6SD**2U Type****Ordering Information**

|             |   |
|-------------|---|
| PE-6SD3-R40 | 5-slot backplane with one PCIe x16 slot, one PCIe x4 slot and two PCI slots |
|-------------|---|

**PE-7S2-R40**Mounting holes  
compatible with PCI-7S**Ordering Information**

|            |  |
|------------|--|
| PE-7S2-R40 | 7-slot backplane with one PCIe x16 slot, four PCIe x1 slots and one PCI slot |
| PAC-1700G  | 7-slot full-size compact chassis   |

1

Industrial  
Computing  
Solutions

2

Video  
Capture  
Solutions

3

Embedded  
Computing  
Solutions

4

Automation  
Control

5

ORing  
Network  
Communication

6

Power Supply/  
Peripherals

7

Panel  
Solutions  
Introduction