

■ High Energy Density, Light Weight and Compact DC/DC UPS & Power Module

Protect your precious equipment from damage. Reduce the risk of losing valuable data.

An uninterruptible power supply provides emergency backup power when the main power is lost.

Benefits:

- Provides power for a certain amount of time after a power failure has occurred.
- Provides stable power to equipment during line sags and spikes.
- Absorbs power surges and transients.
- Smooths out noisy power sources.

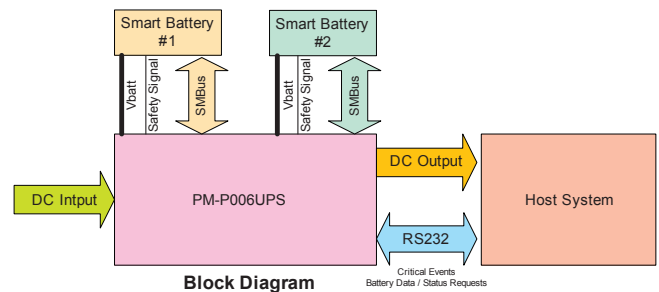
The utility software displays the following information:

- Current power source
- Battery status
- Charging status
- Remaining battery percentage

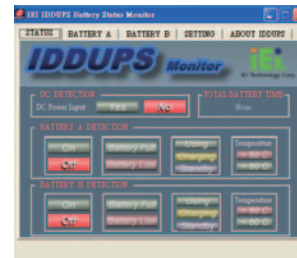


Battery Capacity Status

■ Level 2 Smart Battery Charger & Power Modules



Block Diagram



Battery Monitoring Utility



Battery Monitoring Connection Cable
(PN: 32100-157200-RS)

■ Battery Pack (P/N: BAT-LI-2S2P3000)



Battery Type	Lithium Ion			
Pout (W)	100	80	60	40
Time (min)	8	14	18	27
Dimensions	148 x 89 x 20 mm			
Capacity	3000 mAH			

■ Pin Assignments

Input Power Connector

CN1	Pin 1	Pin 2	Pin 3	Pin 4
	VIN	VIN	Gnd	Gnd

I/O Interface RS-232 Connector

JP2	Pin 1	Pin 2	Pin 3
	Gnd	TX	RX

Output Power Connector

CN7	Pin 1	Pin 2	Pin 3	Pin 4	Pin 5	Pin 6	Pin 7	Pin 8	Pin 9	Pin 10	Pin 11	Pin 12
	N12V	Gnd	12 V	Gnd	3 V	3 V	Gnd	5 V	5 V	Gnd	5 VSB	Gnd

ATX Mode Connector

CN2	Pin 1	Pin 2	Pin 3	Pin 4
	PWROK	5 VSB	Gnd	PS_ON

Battery Connector

J1 J2	Pin 1	Pin 2	Pin 3	Pin 4	Pin 5	Pin 6	Pin 7
	BAT+	BAT+	Clock	Data	Temp	Gnd	Gnd

■ Wire Harness Selection Guide

DC Input



Options 1.

PN: CB-P1LP4-RS

Cable for FSP0601AD101C 60 W / UP0451E12P 45 W/UP0251E12PL 25 W AC-DC adapter



Options 2.

PN: CB-MD4P4-RS

Cable for 63000-FSP120AAB-RS 120 W AC-DC adapter



Options 3.

PN: CB-NOLP4-RS

Cable for terminal block

Power On/Off



Options 1.

PN: CB-JST3PSW001-RS

Cable to SBC(power ok & 5 VSB)

Pin1= Power ok

Pin2= 5 VSB

Pin3, 4= Connector switch